

Logging In To CourseVector Analytics

The screenshot displays the CourseVector Analytics dashboard for the website 'support-files.com'. The dashboard is organized into several sections:

- Visits Over Time:** A line graph showing visits from January 6 to February 3, 2016. The y-axis represents the number of visits, ranging from 0 to 30.
- Visitor Location (Country):** A table showing the number of visits from various countries.

COUNTRY	VISITS
United States	167
United Kingdom	46
Russia	9
Australia	2
Germany	2
- Visitor Location (City):** A table showing the number of visits from various cities.

CITY	VISITS
Unknown	65
Ashburn, Virginia, United States	25
Camp Hill, Pennsylvania, United States	15
Saunderstown, Rhode Island, United States	11
Orlando, Florida, United States	7
- Device type:** A table showing the number of visits from various device types.

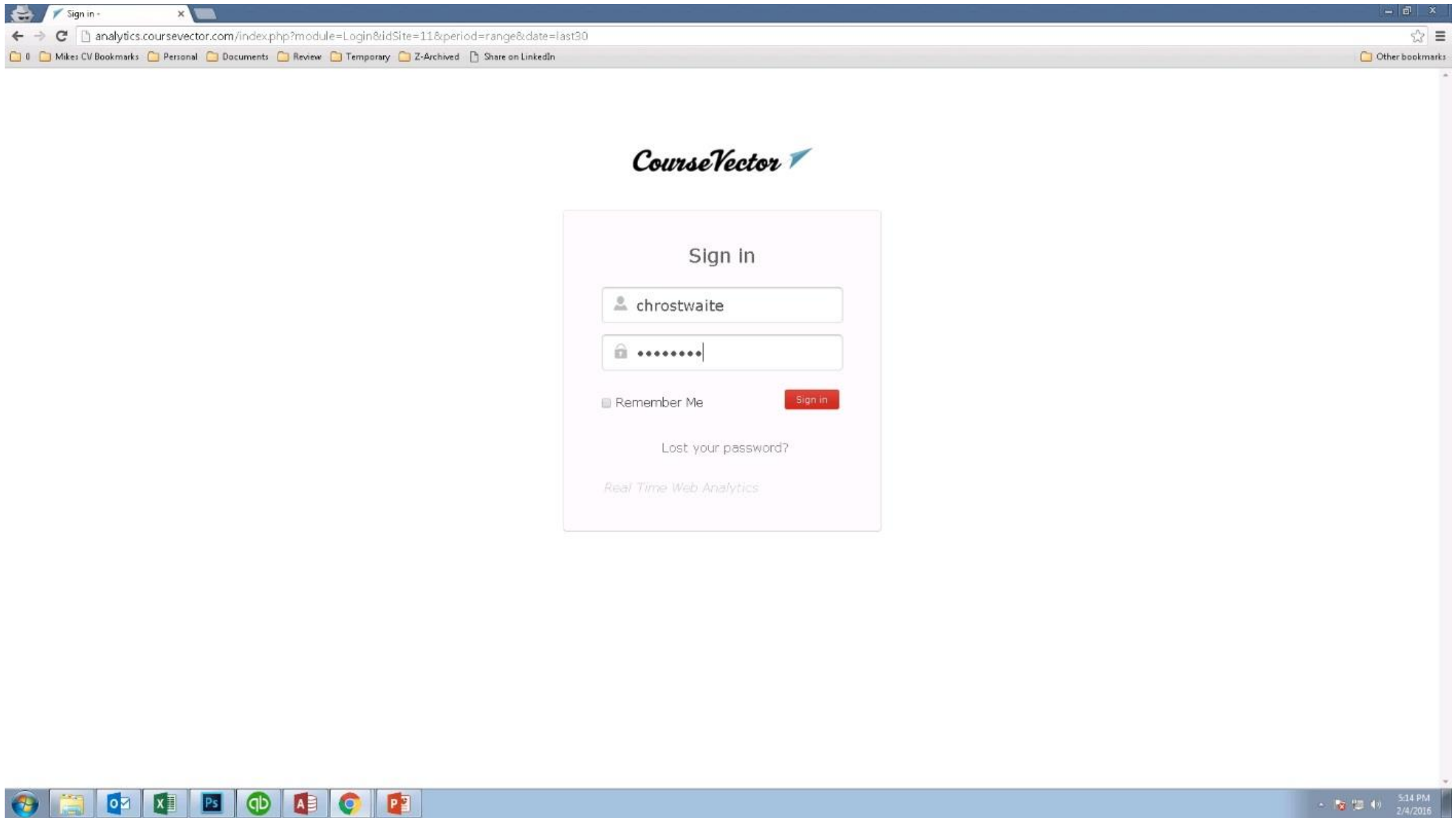
TYPE	VISITS
Desktop	220
Smartphone	13
Tablet	4
Phablet	2
Camera	-
Car browser	-
Console	-
Feature phone	-
Portable media player	-
Smart display	-
Tv	-
- Device brand:** A table showing the number of visits from various device brands.

BRAND	VISITS
Unknown	222
Apple	9
Nokia	2
Samsung	2
Asus	1
Huawei	1
- SEO Rankings:** A section showing the website's ranking for support-files.com. It includes a search bar for the website URL and a 'Rank' button. Below the search bar, it lists various SEO metrics: Google indexed pages (1,540 Pages), Google PageRank (2 / 10), Bing indexed pages (599 Pages), Alexa Rank (11,775,891), and Domain Age (11 years 251 days).
- Visits Overview:** A section showing key metrics: 239 visits, 2 min 24s average visit duration, 59% visits have bounced (left the website after one page), and 2.4 actions (page views, downloads, outlinks and internal site searches) per visit.
- Site Search Keywords:** A table showing the number of searches, search results pages, and search exits for various keywords.

KEYWORD	SEARCHES	SEARCH RESULTS PAGES	% SEARCH EXITS
godaddy	2	1	50%

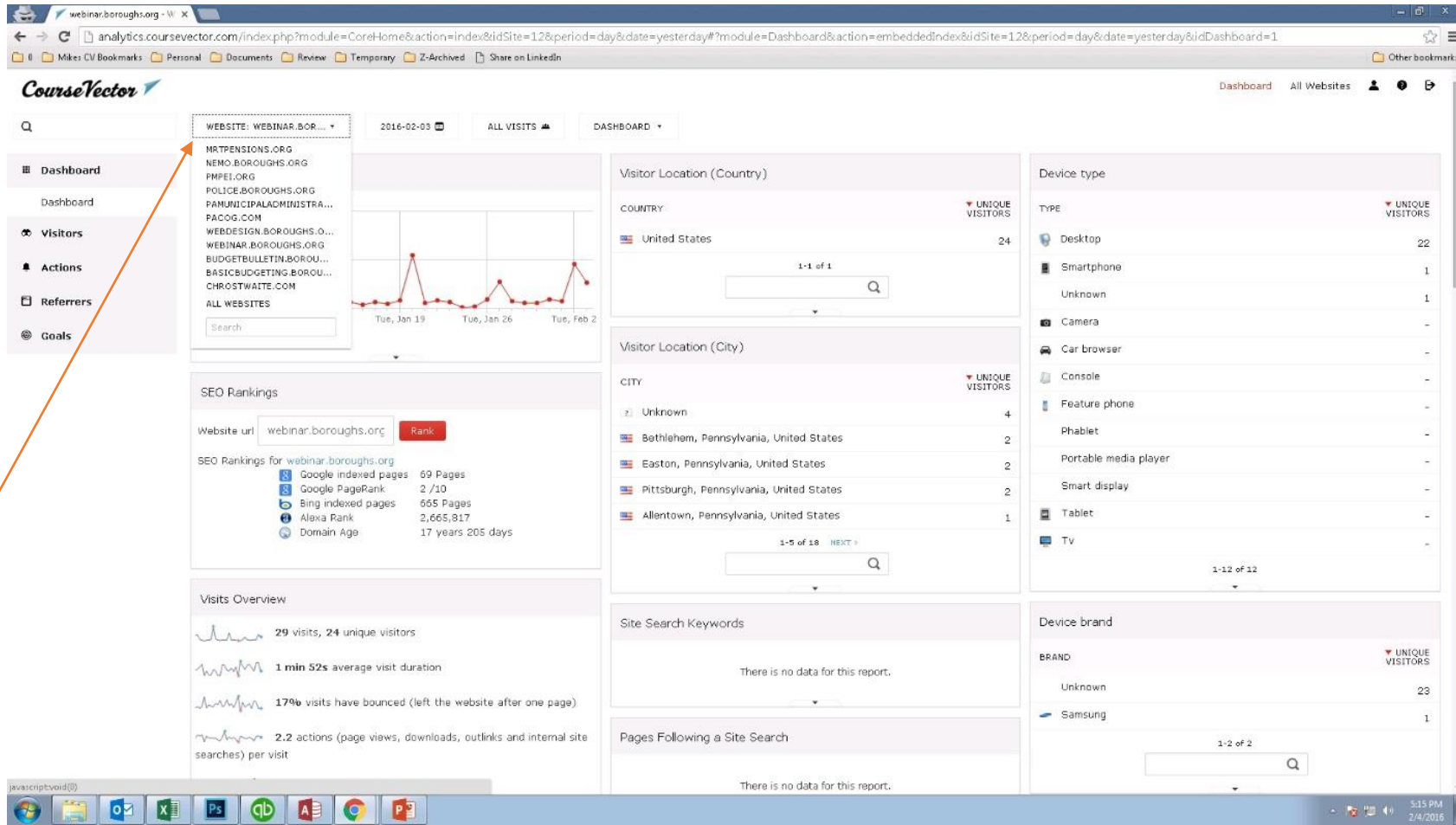
An orange arrow points to a door icon in the top right corner of the dashboard, which is used for logging in to the analytics.

Go to <http://analytics.coursevector.com> The display will show the sample site and data. To log in to your analytics, click on the door icon in the upper right corner.



Enter the access information provided to you in the email.

Links to
Details



Additional
websites if
available

The above screen is your dashboard and shows an overview of your site analytics for the last 30 day period. Details can be viewed via the links on the left (Visitors, Actions, Referrers . . .) If you have more than one website within your account, you can switch website analytics via the drop down box at the top.