

## Viewing Disk Space and Bandwidth Usage

The screenshot displays the cPanel interface for the domain **factoryville.org**. The left sidebar shows the following statistics:

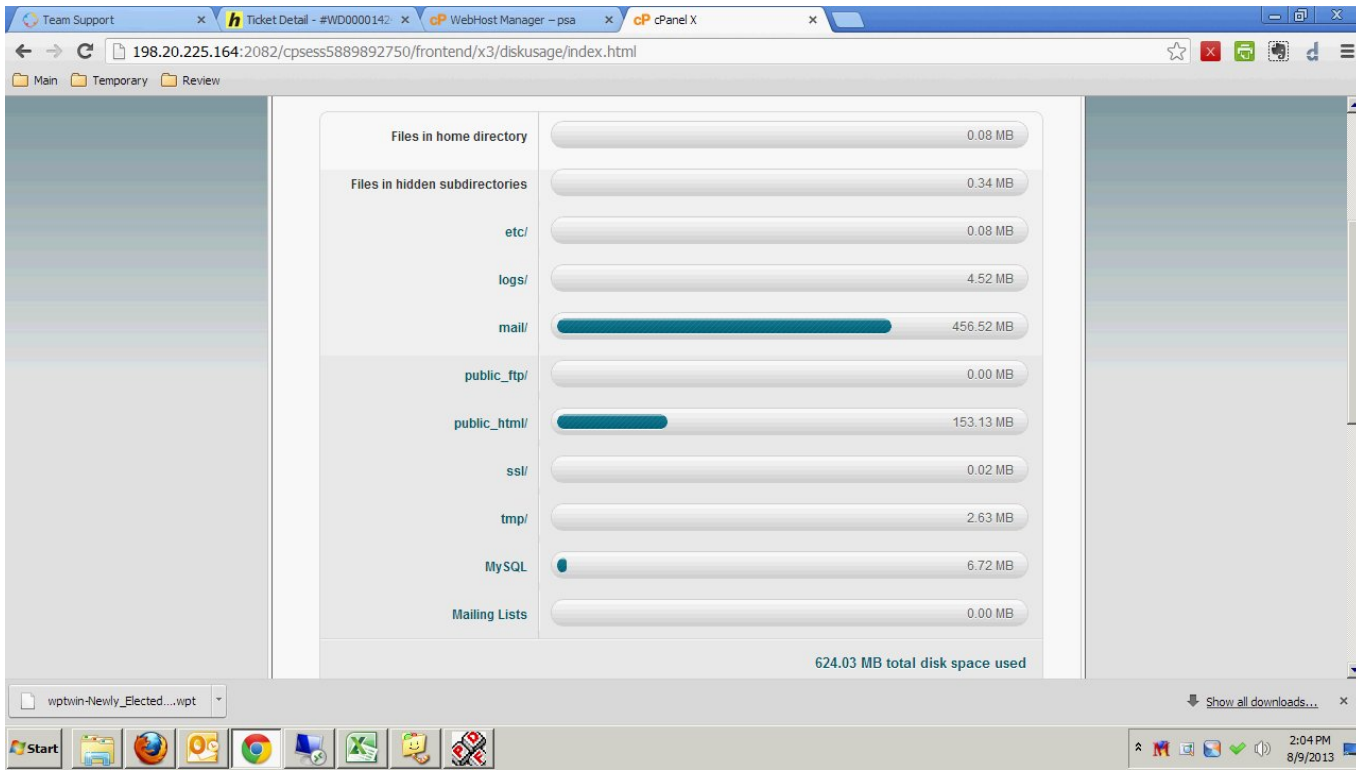
Main Domain	<b>factoryville.org</b>
Home Directory	/home/factoryv
Last login from	174.54.153.170
Disk Space Usage	628.33 / 10,000 MB
Monthly Bandwidth Transfer	287.55 / 50,000 MB

Below the statistics is a link to [expand stats](#). The main content area is organized into several sections:

- Account Level Filtering**: Includes User Level Filtering, Email Trace, Import Addresses/Forwarders, Email Authentication, and MX Entry.
- SEO and Marketing Tools**: Includes Get In Google, SEO Tools, Increase Website Traffic, One-Click Sitemap, Link Building, SEO Tips, and Google Website Services.
- Files**: Includes Backups, Backup Wizard, File Manager, Legacy File Manager, **Disk Space Usage** (highlighted with a red arrow), Web Disk, and FTP Accounts.
- Logs**: Includes Latest Visitors, Bandwidth, Raw Access Logs, and Error Log.
- Security**: Includes Password Protect Directories, IP Deny Manager, SSL/TLS Manager, SSH/Shell Access, HotLink Protection, Leech Protect, and GnuPG Keys.

The Windows taskbar at the bottom shows the Start button, several application icons, and the system tray with the date and time: 2:04 PM, 8/9/2013.

To view disk space usage, log on to cPanel and click on Disk Space Usage.



In the top section of the screen is a summary of the disk space being used by the various components of the web server. In this case Email is taking up 456mb of space while public\_html, which is the web site, is taking up 153mb.

Due to the nature of how files are stored electronically, most files occupy slightly more disk space than their actual size. For example, a 300 byte file may occupy 4 kB of actual disk space. This may cause discrepancies between the data you see in the File Manager versus the information you find in the table below. Moreover, the disk space usage in the table below indicates how much space the directories' contents use, not how much space the directory itself uses. Directories themselves usually use a negligible amount of disk space unless they contain a large number of files or subdirectories.

Sort directories by:  name  disk usage

Directory	Contained disk usage	
	MB	bytes
/	617.31	647294976
.autorespond	0.02	20480
.cpanel	0.31	323584
.htpasswd	0.00	0
.sqmailattach	0.00	0
.sqmaildata	0.01	12288
.trash	0.00	0
etc	0.08	81920
logs	4.52	4743168
mail	456.52	478691328
public_ftp	0.00	4096
public_html	153.13	160563200
ssl	0.02	20480
tmp	2.63	2752512

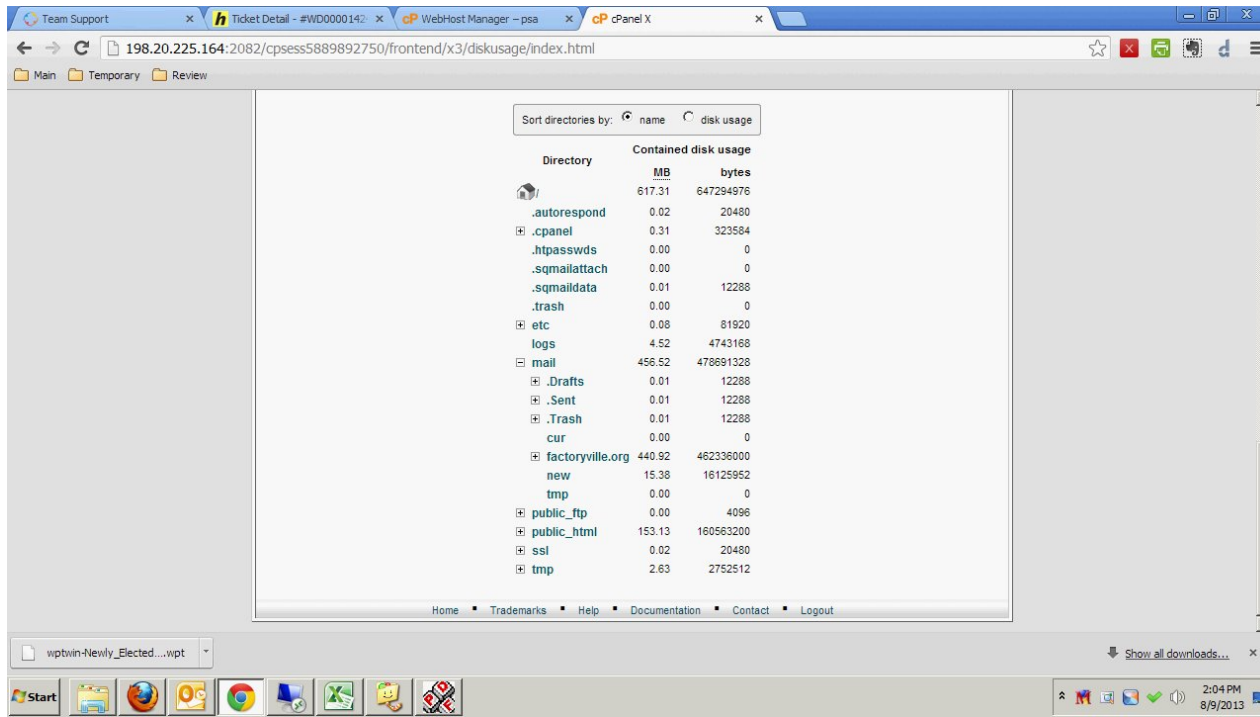
Home | Trademarks | Help | Documentation | Contact | Logout

wptwin-Newly\_Elected...wpt

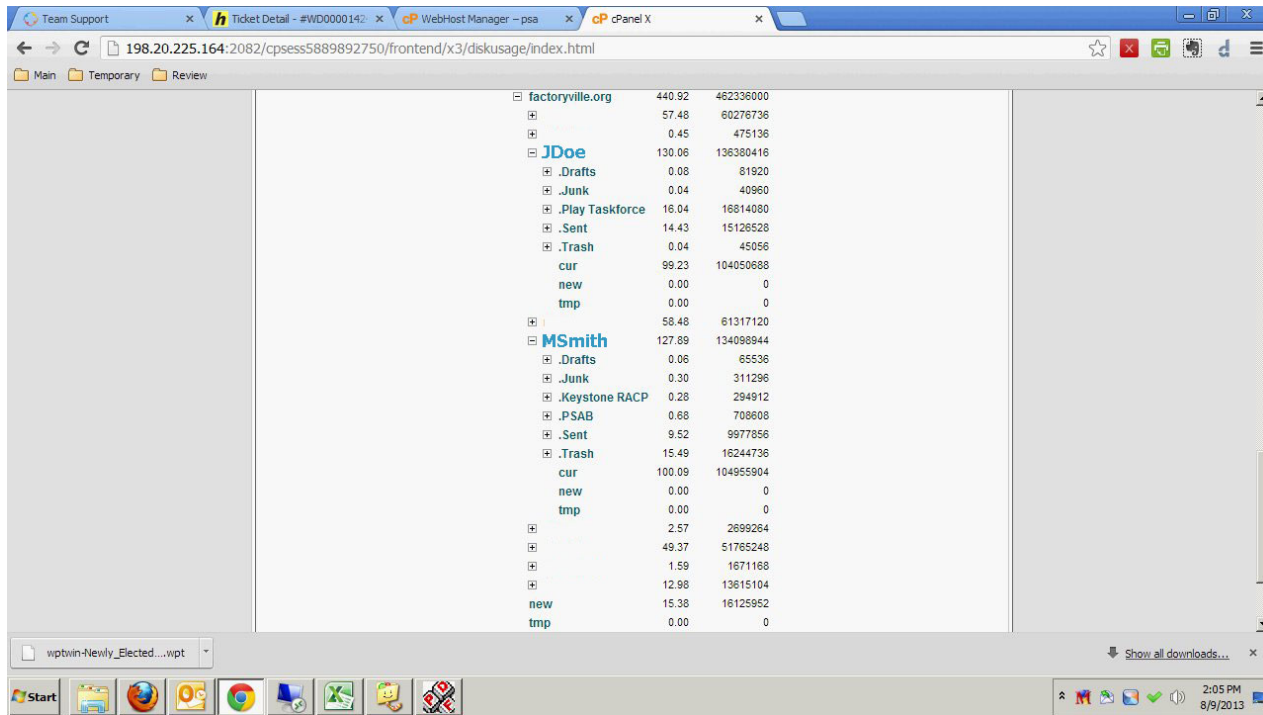
Show all downloads...

Start | Internet Explorer | Google Chrome | ... | 2:04 PM 8/9/2013

On the bottom half of the screen is a directory listing representing the same information as was presented on the top half of the screen. However, this section can be expanded or drilled-down to show where the space is actually be used. Clicking on the + beside mail will show the following screen.

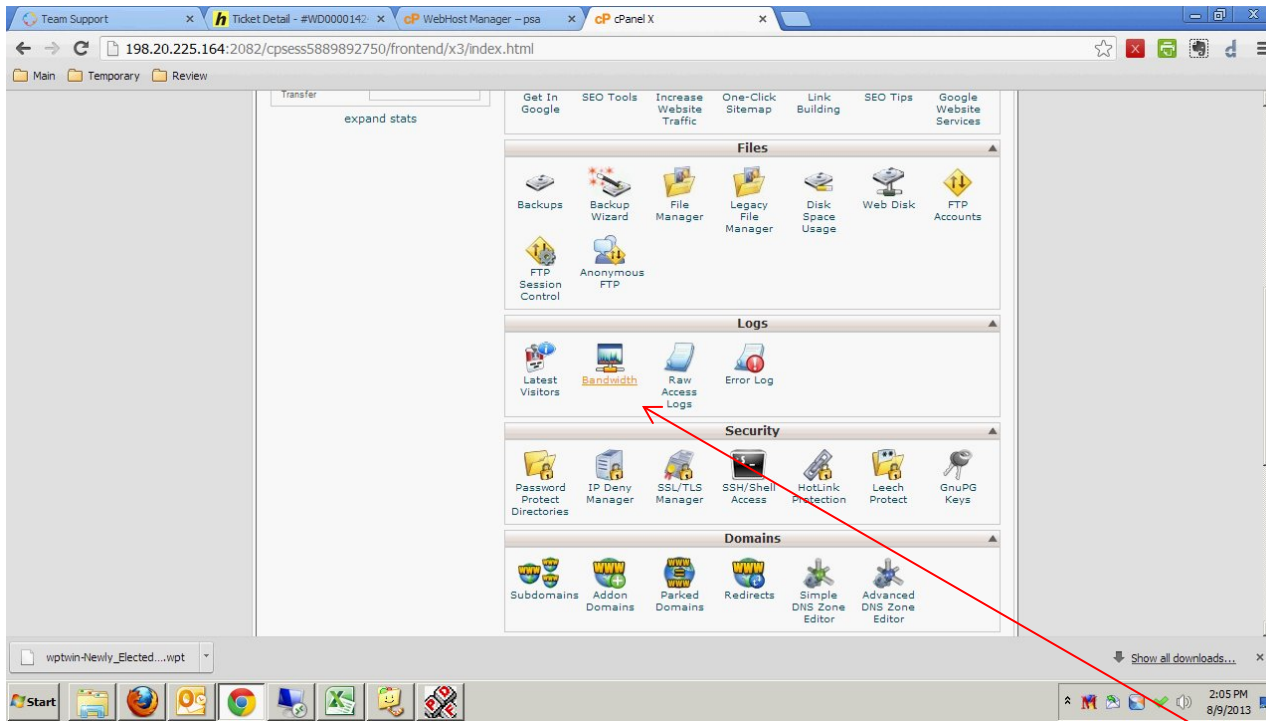


Clicking on the domain name, in this case, factoryville.org, will drill down even farther into the Email directory and yield the next screen.

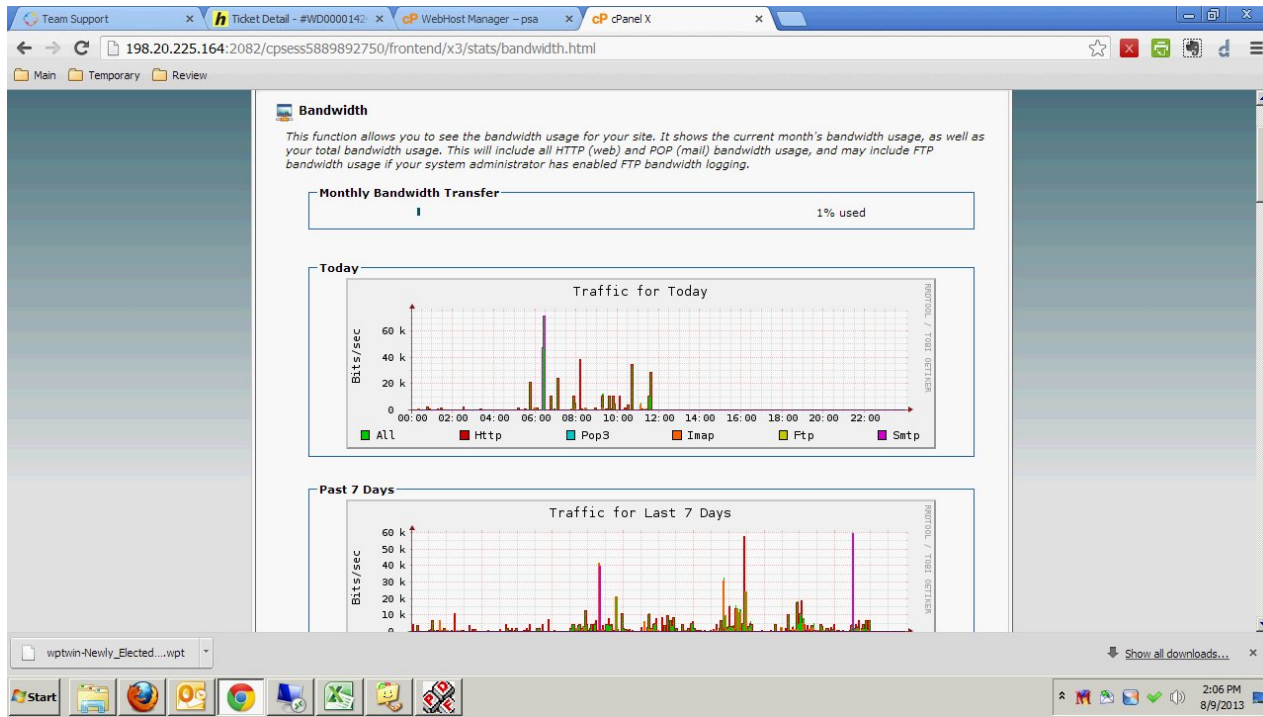


Now the specific mailboxes are visible showing not only the disk usage for the mailbox, but also any folders the user may have under that mailbox. For instance, JDoe's mailbox is 136mb and most of the mail is stored in the cur or current folder which is using 104mb of storage space.

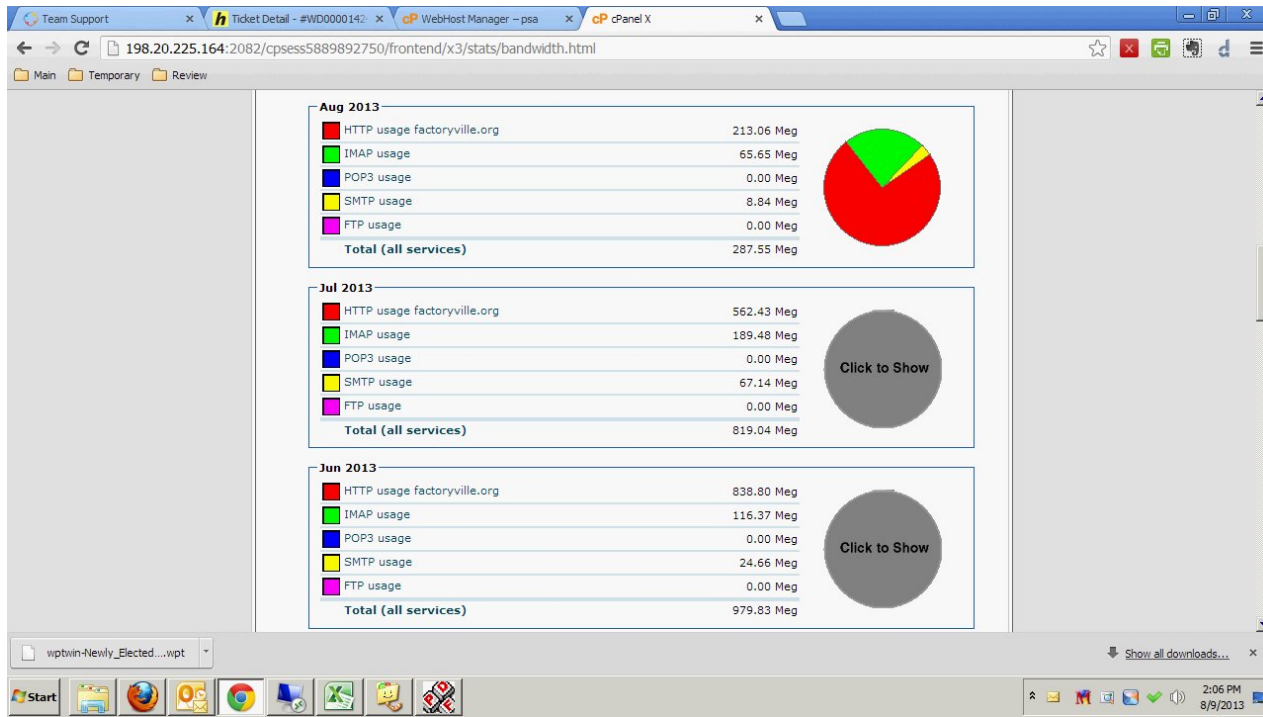
Disk usage for all areas of a web server are viewable through this interface.



To view bandwidth usage, return to the main cPanel screen and choose the Bandwidth icon.



At the top of the screen is the most important statistic which is the percentage of the server's total allotted bandwidth. Usually, unless a site is very large and extremely active, bandwidth is not an issue. Normally, if a bandwidth warning is issued, it is an indicator of other problems with the server and should be reported to your ISP immediately.



Farther down the page is a representation of where the bandwidth is being used on the server.

If you are looking for ways to reduce the disk space being used, please look for other articles/tutorials on this site that may address this issue.

If you are having a bandwidth issue, please contact your ISP as soon as possible.